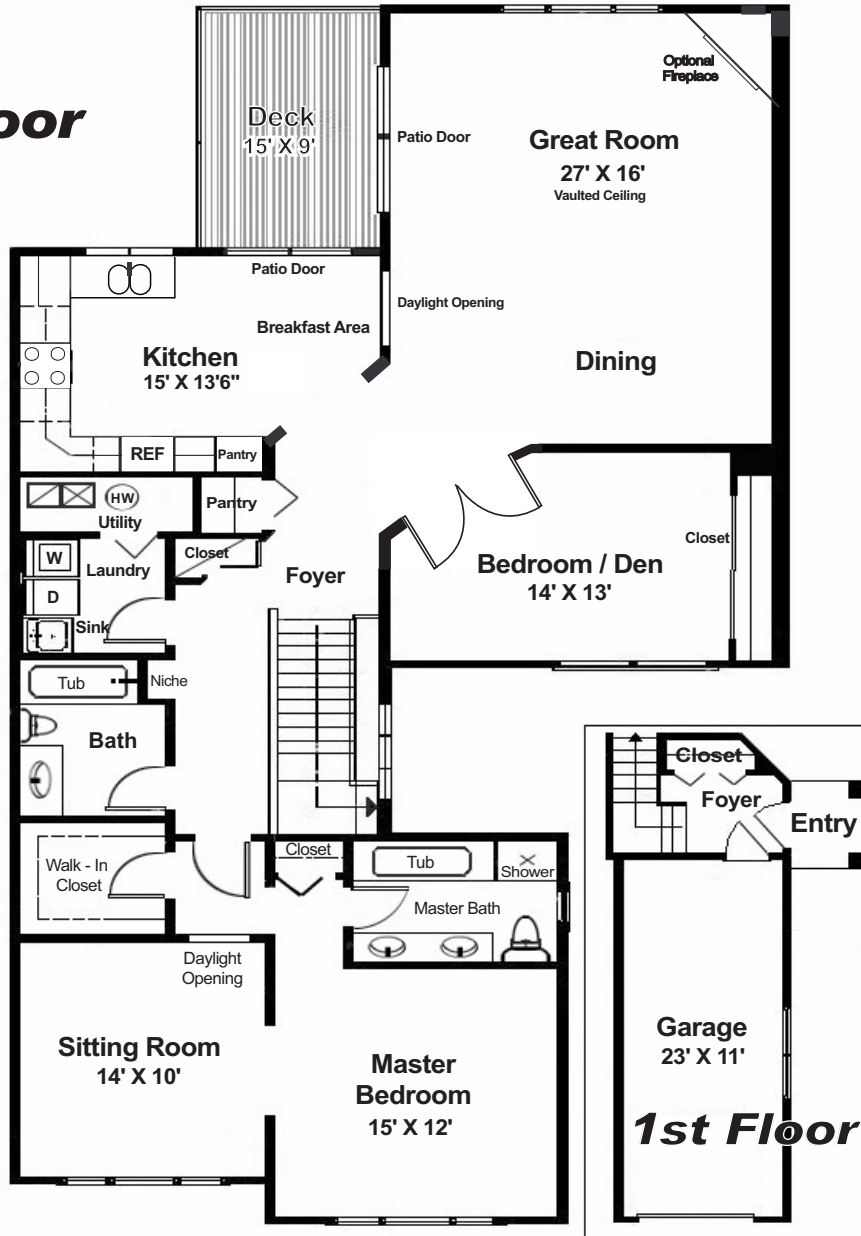


THE CLOVER



2nd Floor



The Prairie Wind Townhomes of Lake Geneva, LLC. policy of continual attention to design and construction requires that all specifications, designs, material and equipment, dimension, landscaping, methods, prices and other criteria are subject to change without notice.

1150 Park Drive, Lake Geneva, Wisconsin 53147 - Office 262-248-2920

www.prairiewindtownhomes.com

Updated 5/10/07
103 Clover Floor Plan